



# The Pukeko Call



Learning for the Future. Akoranga wa hou.

Every child succeeding in an encouraging and stimulating learning environment.

Tena Koutou

### Gumboot Hi Koi.

The Gumboot Hi Koi was a marvellous way to finish off our three weeks of walking to school. Thank you to all of our parents and children for getting behind this idea.

Friday morning was just a simple but fun way to mark the last day of this travel wise promotion. The ideas of sustainability and keeping active without a doubt helped promote our value of community as we all waved to each other and became much more visible as we walked to school from home or the Sports Club.

### Country Show Day.

Our newsletter today includes a flyer from the PTA outlining the countdown to Country Show Day and many of the elements that make this day such a success.

Country Show day is such a fabulous tradition but it takes the involvement of our whole community to make it a success. Our PTA are today asking you to commit to several things. One of those is to man

a stall on the day and to make yourself available for the roster. This has been the case in the previous two years I have been at Kaipara Flats and I think you in advance for committing in this way.

### Netball

Netball North Harbour will be running classes with our children during the final four weeks of the term. On the 30th of August they will be running a workshop with our teachers to help build their knowledge of how to teach netball skills.

I would like to invite any parents or friends of the school to join us at that workshop 3.15 - 4.30pm on Wed. 30th. This will be a valuable learning opportunity for any parents who friends who would like to develop their coaching skills. Please drop me an Email if you want to participate. The more the merrier.

Nga mini nui

Gary O'Brien

My email address is: [garyo@kaiparaflats.school.nz](mailto:garyo@kaiparaflats.school.nz)

### Term 3 2017 Dates:

Aug. 23rd. Wed. Open day at Mahurangi College.

Aug. 24th. Thurs. - Board Meeting 7pm.

Aug. 25th Fri. Takahe Assembly 2.30pm.

Aug. 31st. Thurs. HBC Cross Country.

Sept. 8th Fri. School Photos.

Sept. 8th Fri. Kea Assembly 2.30pm

Sept. 12th. Tues. Inter School Hockey.

Sept. 22nd. Fri. Piwakawaka assembly 2.30pm.

Sept. 29th Fri. - Final Day of Term 3.

**Country Show Day! Saturday 4th November.**



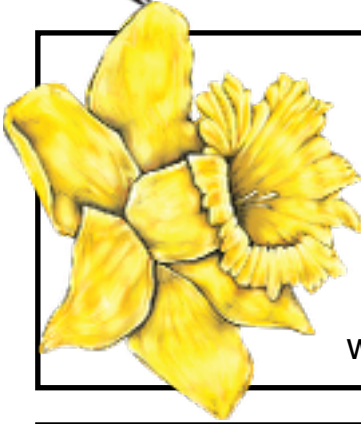
# School and Community Notices



## Daffodil Day

Support cancer research.

We will be supporting daffodil day on the 25th August with a crazy hair day for the children. Children who have crazy hair on that day should also donate a gold coin. Daffodils will also be available from our office for a gold coin donation. All funds will be forwarded to the Cancer Society.



## School Photos Sept 8th.

Our class and individual photos will be taken on Fri 8th of Sept. You will have received information about this from your child. If you would like photos taken of Siblings together please pick up a special sibling envelope from the school office.

PhotoLife

## Yummy Stickers

Reminder to those of you who are collecting Yummy Stickers that we have to have them in by the end of this term. Please bring them into school. This promotion provides us with a little extra money every year. Thank you to all those who take the time to and make the effort.



catwalk  
ARTS



CatWalk Arts is making a comeback this 13-14 October at Mahurangi College. This is a great opportunity to create your own Wearable Art and show it off! There is a special 'Creative Creatures' category for children 14 and under. (You are allowed help from a grown-up for this category) and also a youth category (for 14 – 19 year olds). You can design and create either by yourself, or in a group. There's cash prizes up for grabs, so GET CREATING! An entry form and full details can be downloaded from the Warkworth-Wellsford Hospice website - entries close at the end of August. This is a combined fundraiser by Warkworth-Wellsford Hospice, and Mahurangi College.



Takahe enjoyed making Three D Houses during their latest Stem Challenge!



Kea working hard on their Stem Challenge!



<p><b>BK DESIGN</b> (ADNZ) Specialists in... New Home and Alterations Plans Foundations and Soil Investigations</p> <p><b>BERNIE KOSE</b> ph/fax 425 7695 16a Percy Street Warkworth</p>	<p><b>HORSE RIDING WARKWORTH</b> Horses and ponies for all ages. Riding lessons after school. Great birthday party activity. Family fun farm treks. All rides supervised Bookings essential. <b>PHONE HEATHER OR RODGER 425 8517</b> 41 Kaipara Flats Road.</p>	<p><b>CORESTEEL BUILDINGS ANDREW BOYD</b></p> <p>021 852 029 andrew.boyd@coresteel.co.nz</p> <p>35 Woodcocks Road PO Box 192, Warkworth Ph 09 425 7088, Fax 09 425 7089 <a href="http://www.coresteel.co.nz">www.coresteel.co.nz</a></p>
<p><b>COMMERCIAL DIESEL LTD</b></p> <p>Total Diesel Vehicle Parts &amp; Services BRENT BUTLER &amp; JOHN SANDERSON</p> <p>2 Gumfield Drive Warkworth Ph/Fax 425 8456 email: <a href="mailto:ww.diesel@xtra.co.nz">ww.diesel@xtra.co.nz</a> A/H 422 5550 Mobile: 0274 974 298</p>	<p><b>GUBBS MOTORS LTD</b></p> <p>66 Hudson Road Warkworth</p> <p>Ph: 425 8348</p>	<p><b>SCEATS EARTHMOVERS LTD</b></p> <p>Scrapers, Bulldozer, Digger, Trucks, Roading, Subdivisions, House sites, Farm works. ph: 09 425 8860, fax: 09 425 9831, mob: 0274930970, <a href="mailto:irsceats@xtra.co.nz">irsceats@xtra.co.nz</a> 120 Dennis Road, RD1, Warkworth 0981</p>
<p><b>THE CAMERA SHOP</b> <b>Photos from Cameras and Phones</b></p> <p><a href="http://www.thecamerashop.co.nz">www.thecamerashop.co.nz</a></p> <p><b>TheCameraShop</b> 425 9574</p> <p><a href="mailto:Photos@thecamerashop.co.nz">Photos@thecamerashop.co.nz</a> 35 Queens Street, Warkworth</p>	<p><b>ARTESIAN &amp; SOLWAY WATER</b></p> <p><b>Natural, refreshing, chemical free water Household water tanks, Swimming pools, Events, Commercial use, Roading...</b></p> <p><b>Phone: 09 425 0086.</b> <b>Email:</b> <a href="mailto:info@artesianwater.net.nz">info@artesianwater.net.nz</a> <a href="http://www.artesianwater.net.nz">www.artesianwater.net.nz</a></p>	<p><b>DR HUDS KILLING &amp; PROCESSING</b> NZFSA LISTED</p> <p>Qualified Tradesman specialising in homekill and recreational catch only. ANDREW AND SOMMAI HUDSON 11 Hood Street, Wellsford Ph: 09 423 7213 Fax: 09 423 7215 e: <a href="mailto:info@drhudshomekill.co.nz">info@drhudshomekill.co.nz</a> <a href="http://www.drhudshomekill.co.nz">www.drhudshomekill.co.nz</a></p>
<p><b>MASON CONTRACTORS</b></p> <p>Earthmoving General Contractors Cartage Contractors Metal &amp; Sand Supplies 70 Hudson Road Warkworth Phone: 425 7799</p>	<p><b>HOLLIS &amp; SCHOLEFIELD LTD</b> <b>REGISTERED VALUERS &amp; PROPERTY CONSULTANTS</b></p> <p><b>If you are buying, selling, re- financing or investing in property, talk to the local professionals at HSL.</b></p> <p><b>Steve Jack Ph 425 8810</b> <a href="mailto:valuers@hsl.net.nz">valuers@hsl.net.nz</a> <a href="http://www.hsl.net.nz">www.hsl.net.nz</a></p>	<p><b>Carol Christy</b> <b>Real Estate Professional</b> <b>Harcourts</b> <b>Tandem Realty North Limited</b> <b>Licensed Agent REAA 2008</b> <b>Mobile: 0224298975</b></p> <p><b>Is now the right time to move to a new home or you are looking to buy?</b></p> <p><b>Please call me now to find out how I can assist you.</b></p>
<p><b>F.B. WARREN JEWELLER BRUCE WARREN</b> Proprietor 18 Neville Street, Warkworth PO Box 87, Warkworth, 0941 Ph/Fax: 09 425 7404 A/H 09 422 5824 Serving the Community for 22 Years.</p>	<p><b>EDMONDS &amp; MASON PANEL &amp; PAINT</b> Private &amp; All Insurance Work Contact Wayne 021765706, Ian 021977729 Ph: 425 8723 Fax: 425 9526 Email: <a href="mailto:autoglass@xtra.co.nz">autoglass@xtra.co.nz</a></p>	<p><b>AMANDA EVE JEWELLERY</b></p> <p>Original Designs Repair and Remodelling <a href="http://www.amandaeve.co.nz">www.amandaeve.co.nz</a> 422 5877 <a href="mailto:amanda@amandaeve.co.nz">amanda@amandaeve.co.nz</a></p>
<p><b>FINANCE WISE LIMITED</b></p> <p><b>Nicola Shirley. RFA</b> <b>Mortgage Adviser</b> <a href="http://www.financewise.co.nz">www.financewise.co.nz</a> <b>09 423 8380 or 027 527 2093</b> <a href="mailto:nicola@financewise.co.nz">nicola@financewise.co.nz</a> <b>Confidentiality assured.</b></p>	<p><b>CARPENTER JOINER NEIL KOSE</b></p> <p>Ph: 425 5491 M: 027 275 1173</p> <p>Terraces, Renovation, Alterations, Maintenance, New Housing, Small jobs a speciality</p>	<p><b>MATAKANA COAST ELECTRICAL LTD</b></p> <p>Bevan Wech - Electrician For all your Electrical needs. Domestic, Commercial, Industrial E: <a href="mailto:info@mce.co.nz">info@mce.co.nz</a> <b>H: 4224991</b> <b>M: 0212734619</b></p>